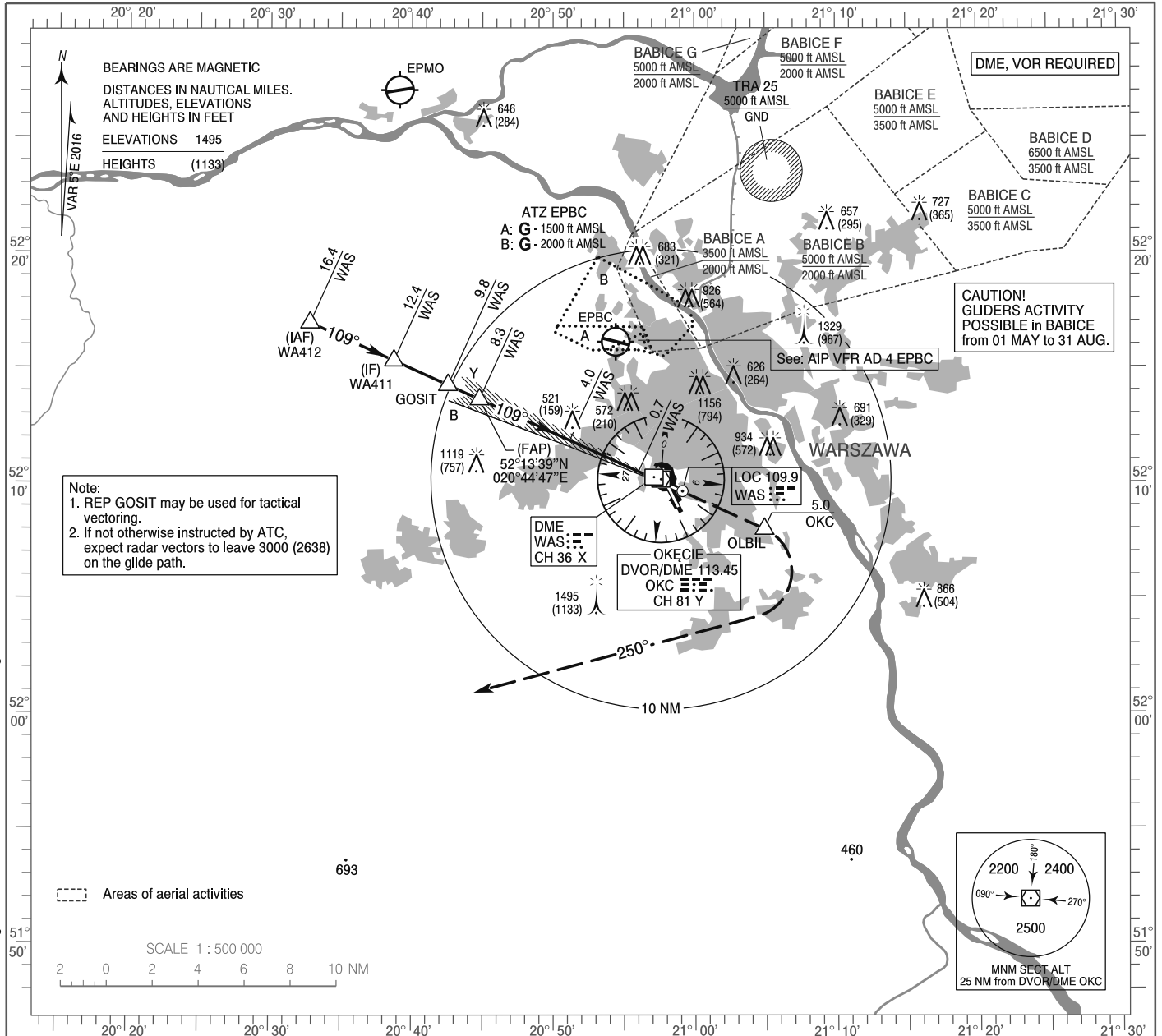


**INSTRUMENT  
APPROACH  
CHART - ICAO**

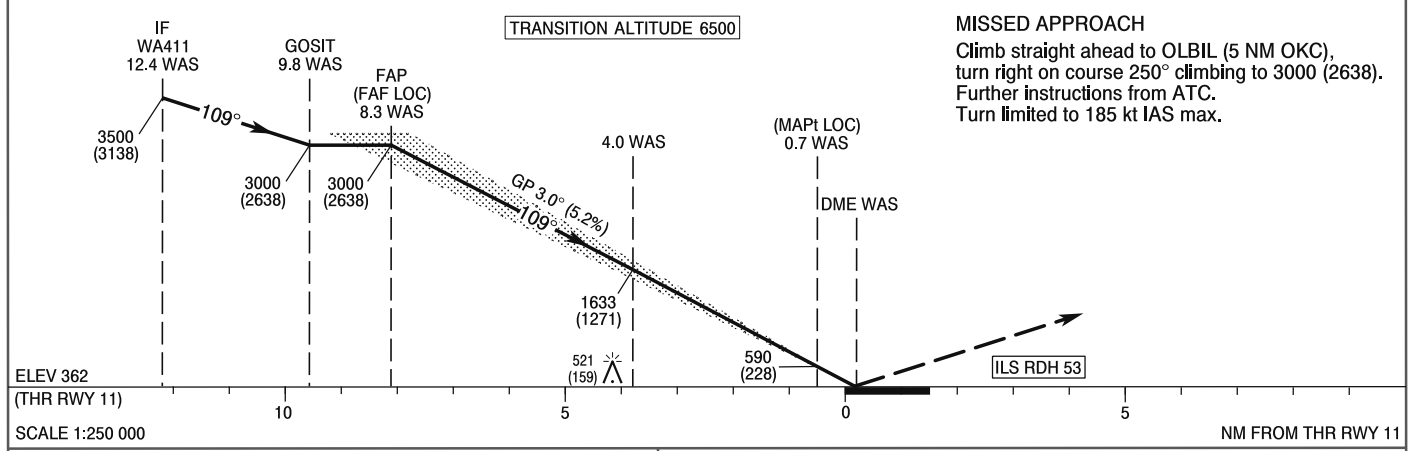
AERODROME ELEV 362 ft  
THR RWY 11 ELEV 362 ft  
HEIGHTS RELATED TO THR RWY 11

Warszawa APPROACH	128.805	Warszawa DIRECTOR	129.380
ATIS	125.055	Okęcie TOWER	118.305
	120.455	Okęcie GROUND	121.905

**WARSAW CHOPIN AIRPORT  
ILS CAT II or LOC  
RWY 11 (CAT A/B/C/D)**



Correction: Circling withdrawn. Obstacles. FREQ. Editorial changes.



OCA (OCH)					Distance FAF - MAPt 7.6 NM								
Cat. of ACFT		A	B	C	D	Speed	kt	80	100	120	140	160	180
		Straight - in	Cat. I	561 (199)	571 (209)	581 (219)	591 (229)	Time	min : s	5 : 41	4 : 32	3 : 47	3 : 15
Cat. II	440 (78)		457 (95)	470 (108)	483 (121)	Rate of descent	ft / min	430	540	640	750	850	960
LOC	770 (408)		770 (408)	770 (408)	770 (408)		Final approach distance/altitude (height)						
Circling approaches are prohibited					Distance	6	5	4	3				
					Altitude (height)	2270 (1908)	1960 (1598)	1640 (1278)	1320 (958)				

**INSTRUMENT  
APPROACH  
CHART - ICAO**

**WARSAW CHOPIN AIRPORT  
ILS CAT II or LOC  
RWY 11 (CAT A/B/C/D)**

FIX / POINT	LATITUDE	LONGITUDE	FIX FORMATION	
IAF WA412	52°16'57.7"N	020°32'48.0"E	114.20° GEO (109° MAG) LOC WAS	16.38 NM DME WAS
IF WA411	52°15'19.3"N	020°38'44.3"E	114.28° GEO (109° MAG) LOC WAS	12.38 NM DME WAS
REP GOSIT	52°14'15.7"N	020°42'33.9"E	114.36° GEO (109° MAG) LOC WAS	9.79 NM DME WAS
FAP (FAF LOC)	52°13'38.6"N	020°44'47.3"E	114.36° GEO (109° MAG) LOC WAS	8.29 NM DME WAS
MAPt (LOC)	52°10'30.4"N	020°56'01.6"E	114.36° GEO (109° MAG) LOC WAS	0.70 NM DME WAS
REP OLBIL	52°08'00.5"N	021°04'54.5"E	115.80° GEO (111° MAG) DVOR OKC	5.00 NM DME OKC
Final approach descent angle: 3.00°				