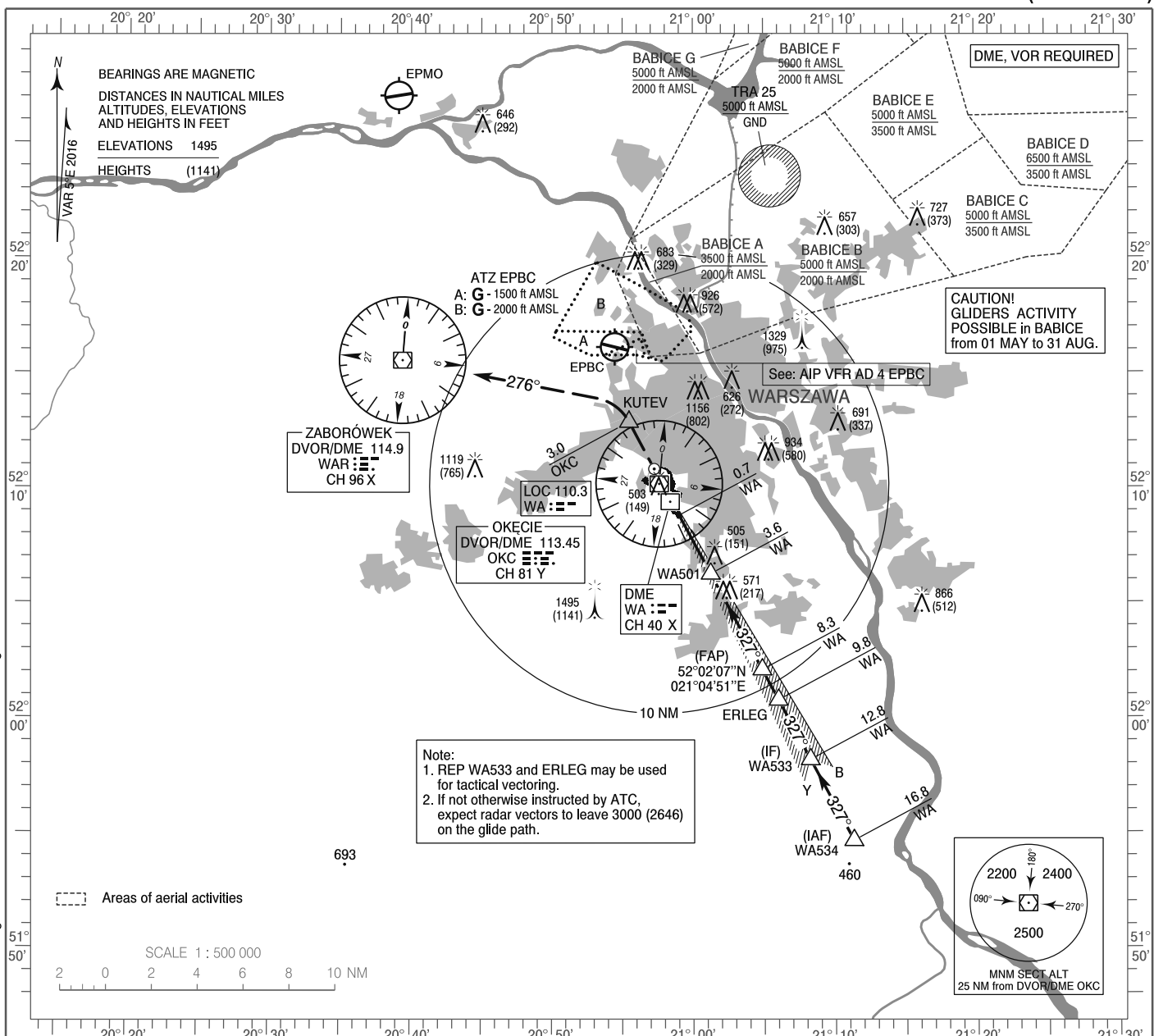


**INSTRUMENT
APPROACH
CHART - ICAO**

AERODROME ELEV 362 ft
THR RWY 33 ELEV 354 ft
HEIGHTS RELATED TO THR RWY 33

Warszawa APPROACH	128.805	Warszawa DIRECTOR	129.380
ATIS	125.055	Okęcie TOWER	118.305
	120.455	Okęcie GROUND	121.905

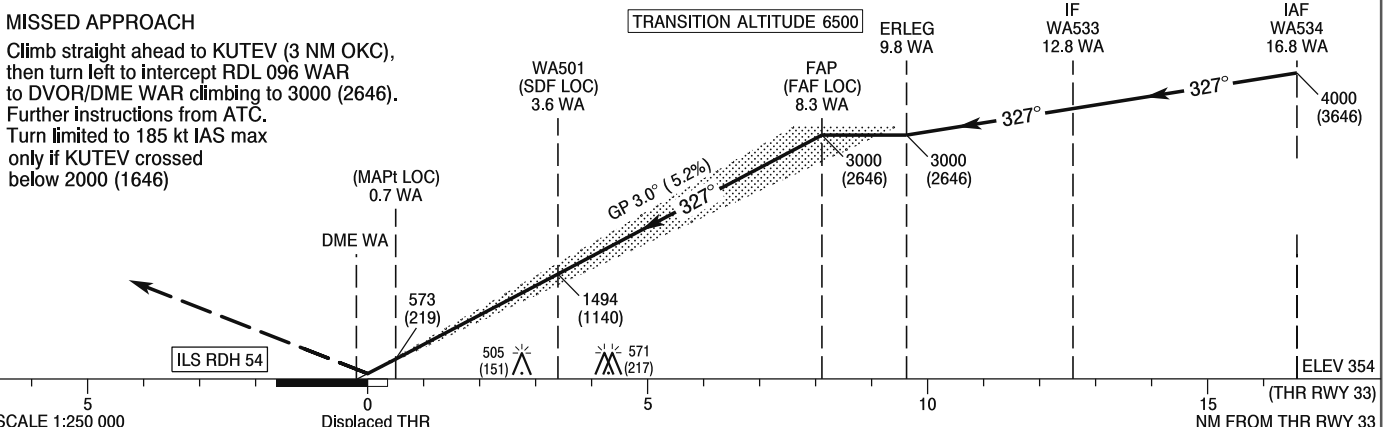
**WARSAW CHOPIN AIRPORT
ILS CAT II & III or LOC
RWY 33 (CAT A/B/C/D)**



Correction: Circling withdrawn. Obstacles. FREQ. Editorial changes.

MISSED APPROACH

Climb straight ahead to KUTEV (3 NM OKC),
then turn left to intercept RDL 096 WAR
to DVOR/DME WAR climbing to 3000 (2646).
Further instructions from ATC.
Turn limited to 185 kt IAS max
only if KUTEV crossed
below 2000 (1646)



OCA (OCH)		A	B	C	D	Distance FAF - MAPt 7.6 NM							
Straight - in	Cat. I	537 (183)	549 (195)	557 (203)	568 (214)	Speed	kt	80	100	120	140	160	180
	Cat. II (2.5%)*	449 (95)	466 (112)	478 (124)	492 (138)	Time	min : s	5 : 43	4 : 34	3 : 49	3 : 16	2 : 51	2 : 32
	Cat. II (3.0%)*	429 (75)	446 (92)	458 (104)	472 (118)	Rate of descent	ft / min	430	540	640	750	850	960
	LOC	760 (406)	760 (406)	760 (406)	760 (406)								
When stepdown fix not received		820 (466)	820 (466)	820 (466)	820 (466)	Final approach distance/altitude (height)							
ILS CAT IIIA approved.													
Circling approaches are prohibited													
		Distance		8		6		4		2			
		Altitude (height)		2900 (2546)		2260 (1906)		1620 (1266)		990 (636)			

**INSTRUMENT
APPROACH
CHART - ICAO**

**WARSAW CHOPIN AIRPORT
ILS CAT II & III or LOC
RWY 33 (CAT A/B/C/D)**

FIX / POINT	LATITUDE	LONGITUDE	FIX FORMATION	
IAF WA534	51°54'40.1"N	021°11'17.8"E	331.91° GEO (327° MAG) LOC WA	16.78 NM DME WA
IF WA533	51°58'11.5"N	021°08'15.1"E	331.87° GEO (327° MAG) LOC WA	12.78 NM DME WA
REP ERLEG	52°00'47.2"N	021°06'00.2"E	331.84° GEO (327° MAG) LOC WA	9.83 NM DME WA
FAP (FAF LOC)	52°02'06.8"N	021°04'51.0"E	331.83° GEO (327° MAG) LOC WA	8.32 NM DME WA
WA501 (SDF LOC)	52°06'16.6"N	021°01'13.7"E	331.83° GEO (327° MAG) LOC WA	3.59 NM DME WA
MAPt (LOC)	52°08'49.4"N	020°59'00.4"E	331.83° GEO (327° MAG) LOC WA	0.70 NM DME WA
REP KUTEV	52°12'52.6"N	020°55'27.7"E	333.94° GEO (329° MAG) DVOR OKC	3.00 NM DME OKC
Final approach descent angle: 3.00°				