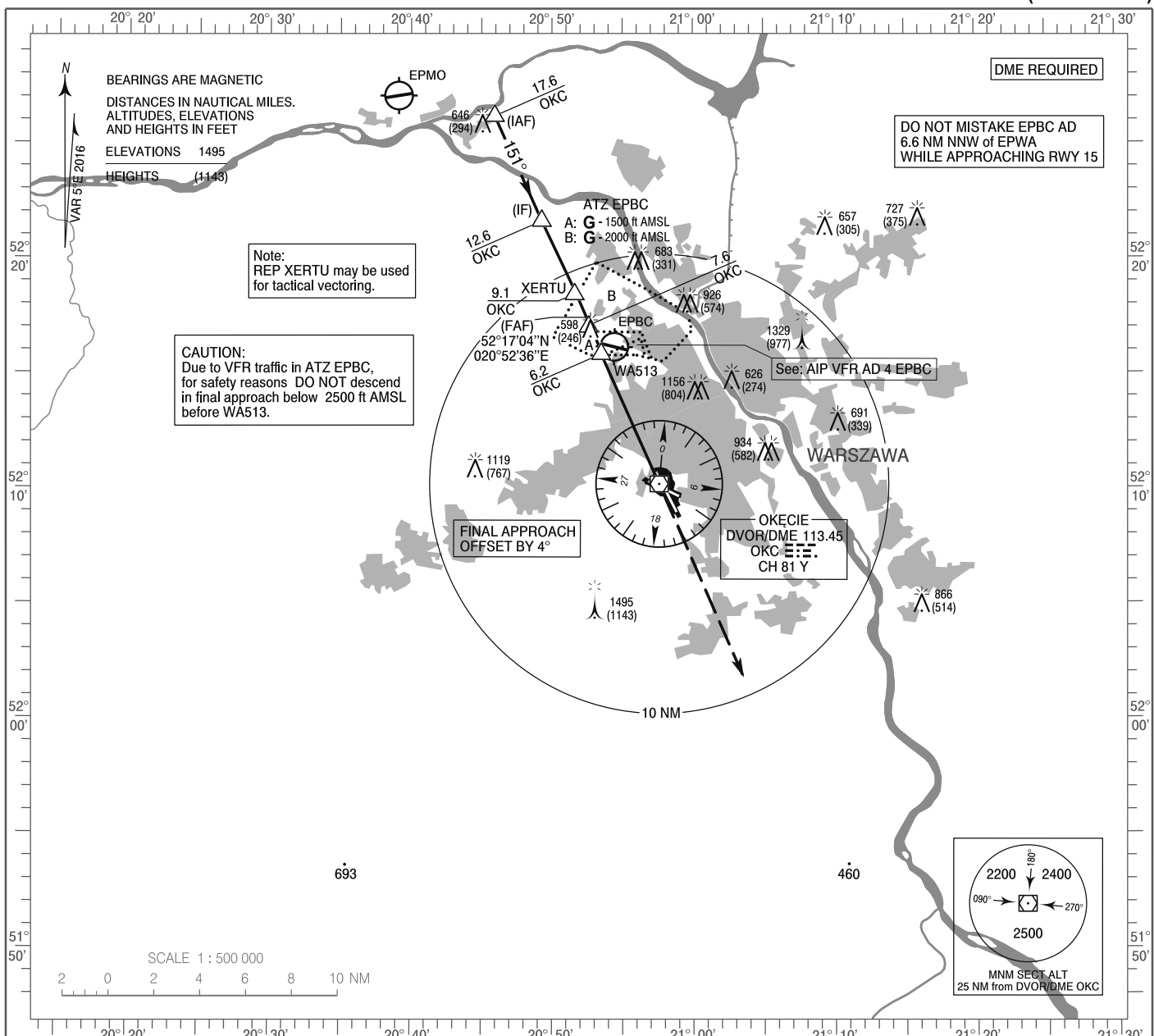


**INSTRUMENT
APPROACH
CHART - ICAO**

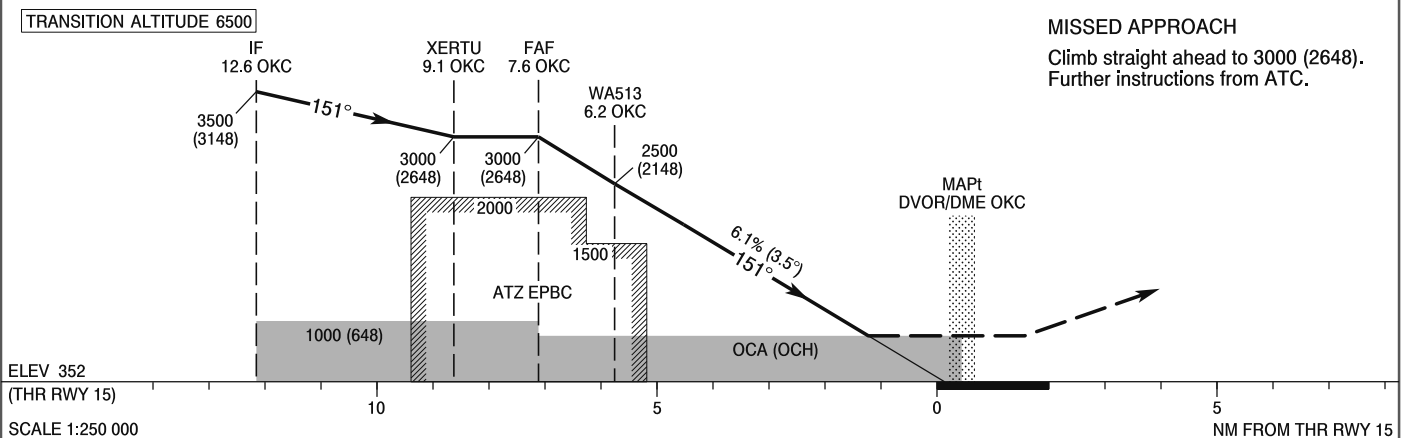
AERODROME ELEV 362 ft
THR RWY 15 ELEV 352 ft
HEIGHTS RELATED TO THR RWY 15

Warszawa APPROACH	128.805	Warszawa DIRECTOR	129.380
ATIS	125.055	Okecie TOWER	118.305
	120.455	Okecie GROUND	121.905

**WARSAW CHOPIN AIRPORT
VOR
RWY 15 (CAT A/B/C/D)**



Correction: Circling withdrawn. Obstacles. FREQ. Editorial changes.



OCA (OCH)					Distance FAF - MAPt 7.6 NM							
Cat. of ACFT	A	B	C	D	Speed	kt	80	100	120	140	160	180
Straight - in	850 (498)	850 (498)	850 (498)	850 (498)	Time	min : s	5 : 40	4 : 32	3 : 47	3 : 14	2 : 50	2 : 31
					Rate of descent	ft / min	500	620	750	870	990	1120
Final approach distance/altitude (height)												
Circling approaches are prohibited					Distance		6	5	4	3		
					Altitude (height)		2430 (2078)	2060 (1708)	1690 (1338)	1320 (968)		

INSTRUMENT
APPROACH
CHART - ICAOWARSAW CHOPIN AIRPORT
VOR
RWY 15 (CAT A/B/C/D)

FIX / POINT	LATITUDE	LONGITUDE	FIX FORMATION	
IAF	52°26'11.5"N	020°45'56.0"E	336.00° GEO (331° MAG) DVOR OKC	17.56 NM DME OKC
IF	52°21'38.0"N	020°49'16.3"E	336.00° GEO (331° MAG) DVOR OKC	12.56 NM DME OKC
REP XERTU	52°18'26.3"N	020°51'36.3"E	336.00° GEO (331° MAG) DVOR OKC	9.05 NM DME OKC
FAF	52°17'04.2"N	020°52'36.2"E	336.00° GEO (331° MAG) DVOR OKC	7.55 NM DME OKC
WA513	52°15'50.4"N	020°53'29.9"E	336.00° GEO (331° MAG) DVOR OKC	6.20 NM DME OKC
MAPt DVOR/DME OKC	52°10'11.1"N	020°57'36.2"E		
Final approach descent angle: 3.50°				