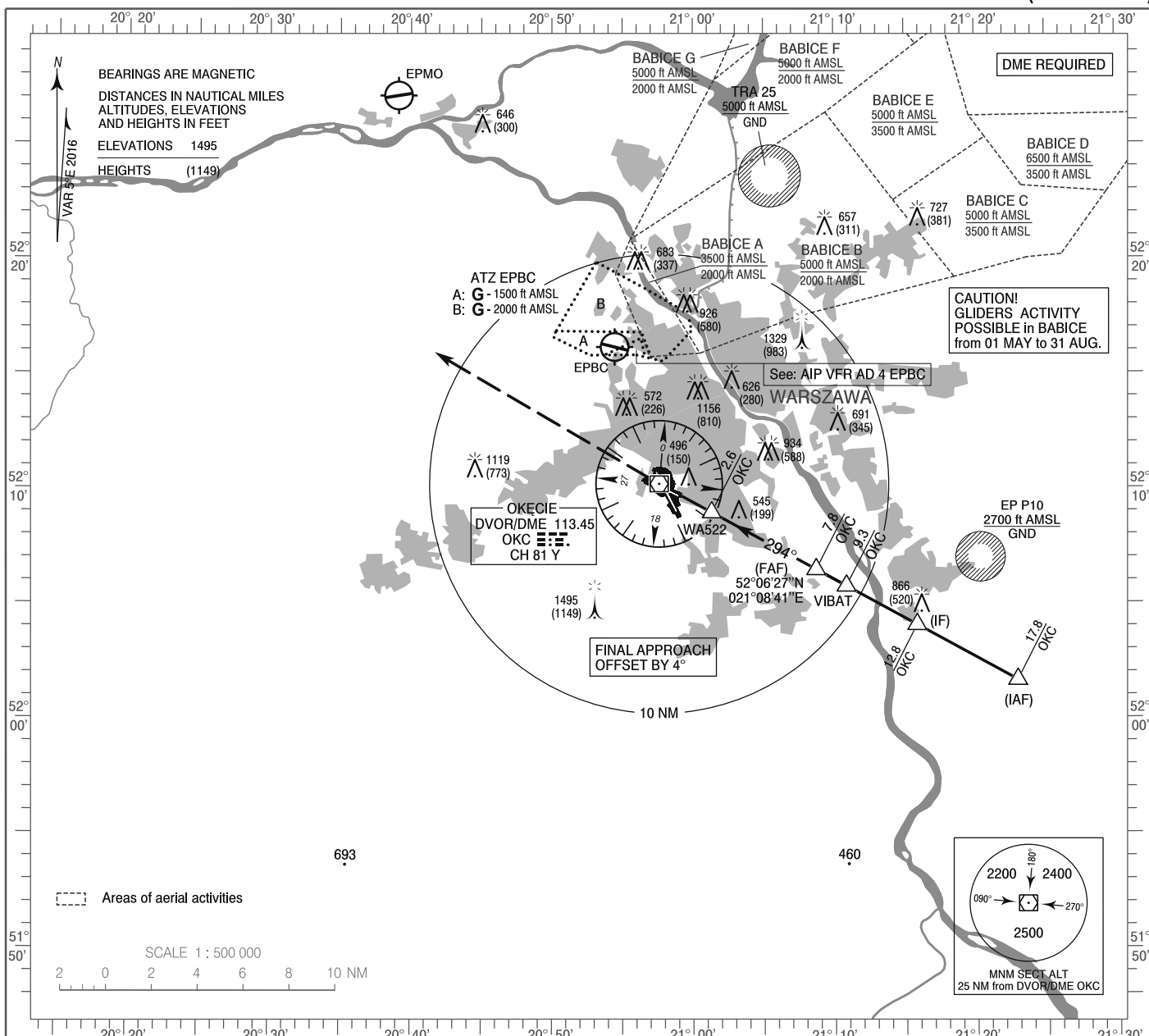


**INSTRUMENT  
APPROACH  
CHART - ICAO**

AERODROME ELEV 362 ft  
THR RWY 29 ELEV 346 ft  
HEIGHTS RELATED TO THR RWY 29

Warszawa APPROACH	128.805	Warszawa DIRECTOR	129.380
ATIS	125.055	Okęcie TOWER	118.305
	120.455	Okęcie GROUND	121.905

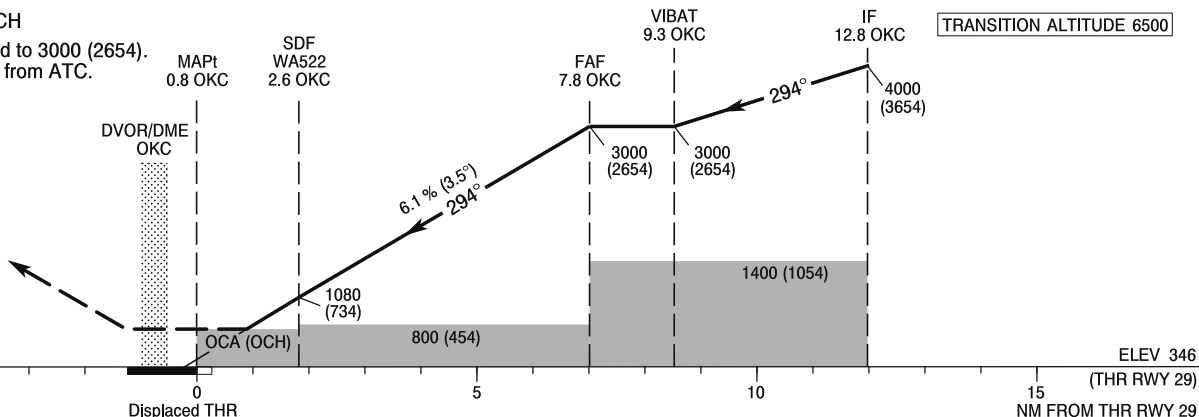
**WARSAW CHOPIN AIRPORT  
VOR  
RWY 29 (CAT A/B/C/D)**



Correction: Circling withdrawn. Obstacles. FREQ. Editorial changes.

**MISSED APPROACH**

Climb straight ahead to 3000 (2654).  
Further instructions from ATC.



Cat. of ACFT	OCA (OCH)				Distance FAF - MAPt 7.0 NM							
	A	B	C	D	Speed	kt	80	100	120	140	160	180
Straight - in	750 (404)	750 (404)	750 (404)	750 (404)	Time	min : s	5 : 16	4 : 13	3 : 31	3 : 01	2 : 38	2 : 21
	When stepdown fix not received				Rate of descent	ft / min	500	620	750	870	990	1120
Final approach distance/altitude (height)												
Circling approaches are prohibited					Distance		6	5	4	3		
					Altitude (height)		2340 (1994)	1970 (1624)	1600 (1254)	1230 (884)		

INSTRUMENT  
APPROACH  
CHART - ICAOWARSAW CHOPIN AIRPORT  
VOR  
RWY 29 (CAT A/B/C/D)

FIX / POINT	LATITUDE	LONGITUDE	FIX FORMATION	
IAF	52°01'38.4"N	021°22'53.8"E	118.58° GEO (114° MAG) DVOR OKC	17.79 NM DME OKC
IF	52°04'03.0"N	021°15'48.2"E	118.58° GEO (114° MAG) DVOR OKC	12.79 NM DME OKC
REP VIBAT	52°05'44.2"N	021°10'49.5"E	118.58° GEO (114° MAG) DVOR OKC	9.29 NM DME OKC
FAF	52°06'27.4"N	021°08'41.5"E	118.58° GEO (114° MAG) DVOR OKC	7.79 NM DME OKC
SDF WA522	52°08'56.5"N	021°01'18.6"E	118.58° GEO (114° MAG) DVOR OKC	2.60 NM DME OKC
MAPt	52°09'49.3"N	020°58'41.2"E	118.58° GEO (114° MAG) DVOR OKC	0.76 NM DME OKC
Final approach descent angle: 3.50°				