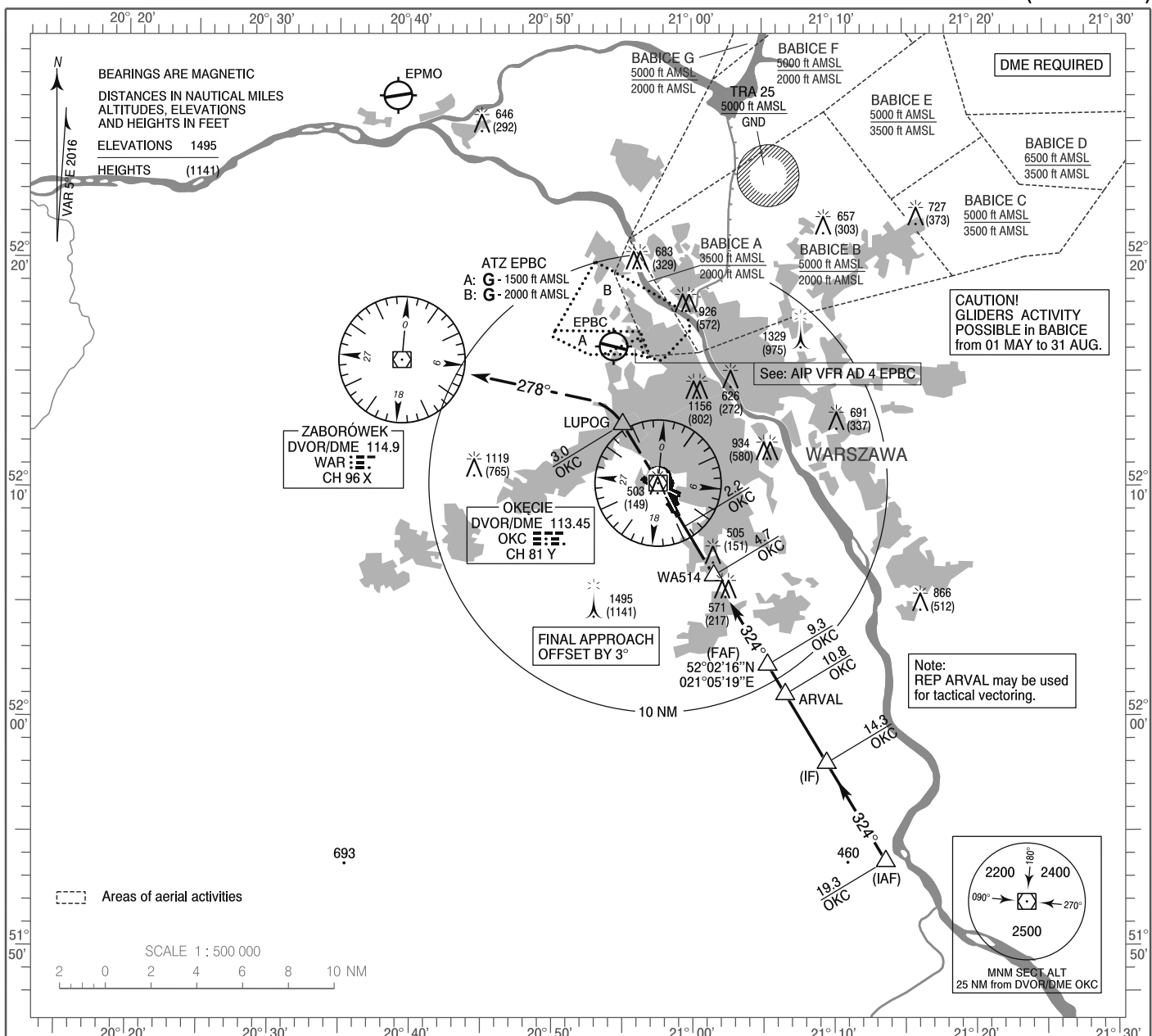


**INSTRUMENT
APPROACH
CHART - ICAO**

AERODROME ELEV 362 ft
THR RWY 33 ELEV 354 ft
EIGHTS RELATED TO THR RWY 33

Warszawa APPROACH	128.805	Warszawa DIRECTOR	129.380
ATIS	125.055	Okęcie TOWER	118.305
	120.455	Okęcie GROUND	121.905

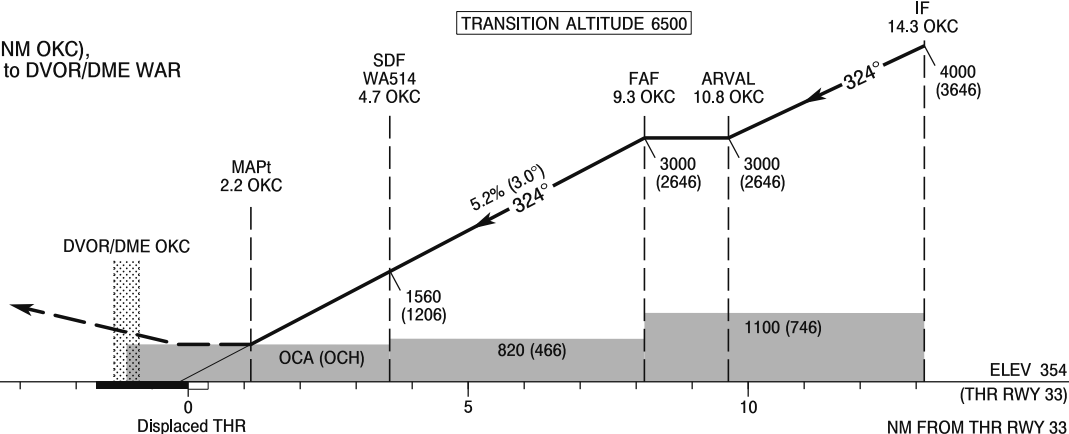
**WARSAW CHOPIN AIRPORT
VOR
RWY 33 (CAT A/B/C/D)**



Correction: Circling withdrawn. Obstacles. FREQ. Editorial changes.

MISSED APPROACH

Climb straight ahead to LUPOG (3 NM OKC),
turn left to intercept RDL 098 WAR to DVOR/DME WAR
climbing to 3000 (2646).
Further instructions from ATC.
Turn limited to 185 kt IAS max.



SCALE 1:250 000

Displaced THR

NM FROM THR RWY 33

Cat. of ACFT	OCA (OCH)				Speed	kt	Distance FAF - MAPt 7.0 NM					
	A	B	C	D			80	100	120	140	160	180
Straight - in	760 (406)	760 (406)	760 (406)	760 (406)	Time	min : s	5 : 14	4 : 11	3 : 29	2 : 59	2 : 37	2 : 19
	When stepdown fix not received				Rate of descent	ft / min	430	540	640	750	850	960
820 (466)				820 (466)	Final approach distance/altitude (height)							
Circling approaches are prohibited				Distance	9	7	5	3				
				Altitude (height)	2920 (2566)	2290 (1936)	1650 (1296)	1010 (656)				

**INSTRUMENT
APPROACH
CHART - ICAO**

**WARSAW CHOPIN AIRPORT
VOR
RWY 33 (CAT A/B/C/D)**

FIX / POINT	LATITUDE	LONGITUDE	FIX FORMATION	
IAF	51°53'41.3"N	021°13'36.5"E	149.00° GEO (144° MAG) DVOR OKC	19.25 NM DME OKC
IF	51°57'58.6"N	021°09'28.2"E	149.00° GEO (144° MAG) DVOR OKC	14.25 NM DME OKC
REP ARVAL	52°00'58.6"N	021°06'33.9"E	149.00° GEO (144° MAG) DVOR OKC	10.75 NM DME OKC
FAF	52°02'15.8"N	021°05'19.1"E	149.00° GEO (144° MAG) DVOR OKC	9.25 NM DME OKC
SDF WA514	52°06'09.7"N	021°01'31.7"E	149.00° GEO (144° MAG) DVOR OKC	4.70 NM DME OKC
MAPt	52°08'17.3"N	020°59'27.3"E	149.00° GEO (144° MAG) DVOR OKC	2.22 NM DME OKC
REP LUPOG	52°12'45.2"N	020°55'05.5"E	329.00° GEO (324° MAG) DVOR OKC	3.00 NM DME OKC
DVOR/DME WAR	52°15'33.3"N	020°39'25.8"E		
Final approach descent angle: 3.00°				