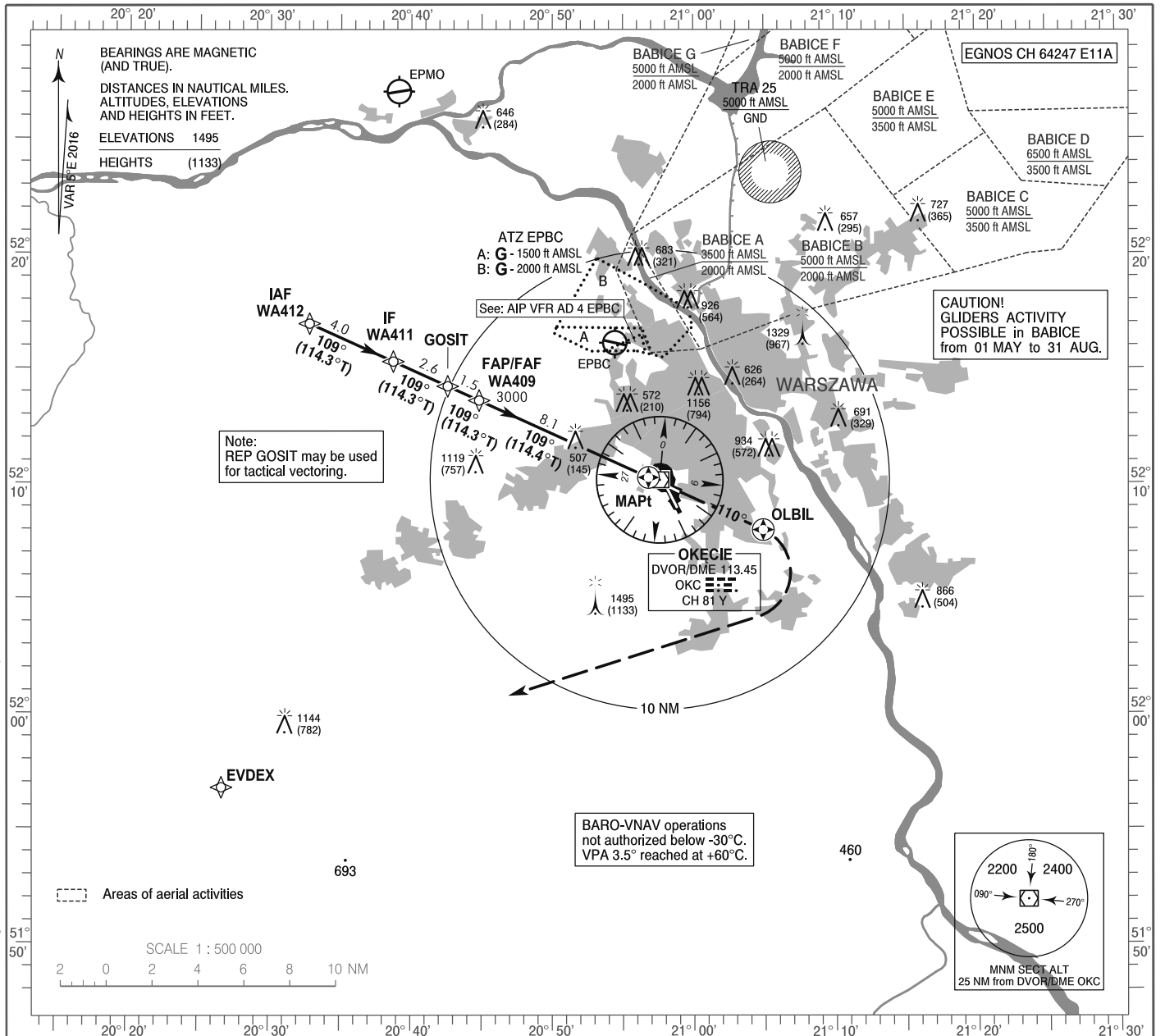


**INSTRUMENT
APPROACH
CHART - ICAO**

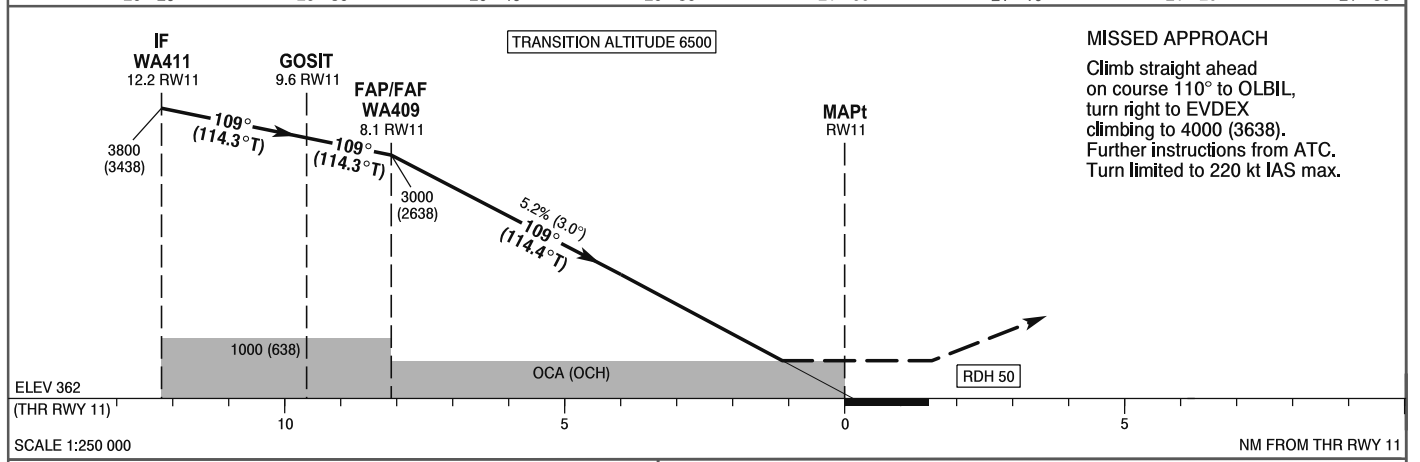
AERODROME ELEV 362 ft
THR RWY 11 ELEV 362 ft
HEIGHTS RELATED TO THR RWY 11

Warszawa APPROACH	128.805	Warszawa DIRECTOR	129.380
ATIS	125.055	Okecie TOWER	118.305
	120.455	Okecie GROUND	121.905

**WARSAW CHOPIN AIRPORT
RNAV (GNSS)
RWY 11 (CAT A/B/C/D)**



Correction: Circling withdrawn. Obstacles. FREQ. Editorial changes.



OCA (OCH)					Distance FAF - MAPt 8.1 NM								
Cat. of ACFT	A	B	C	D	Speed	kt	80	100	120	140	160	180	
Straight - in	LNAV	760 (398)	760 (398)	760 (398)	760 (398)	Time	min : s	6:06	4:53	4:04	3:29	3:03	2:43
	LNAV / VNAV	640 (278)	650 (288)	660 (298)	670 (308)	Rate of descent	ft / min	420	530	630	740	850	950
	LPV	560 (198)	572 (210)	580 (218)	590 (228)	Final approach distance/altitude (height)							
Circling approaches are prohibited					Distance		8	6	4	2			
					Altitude (height)		2960 (2598)	2320 (1958)	1680 (1318)	1040 (678)			