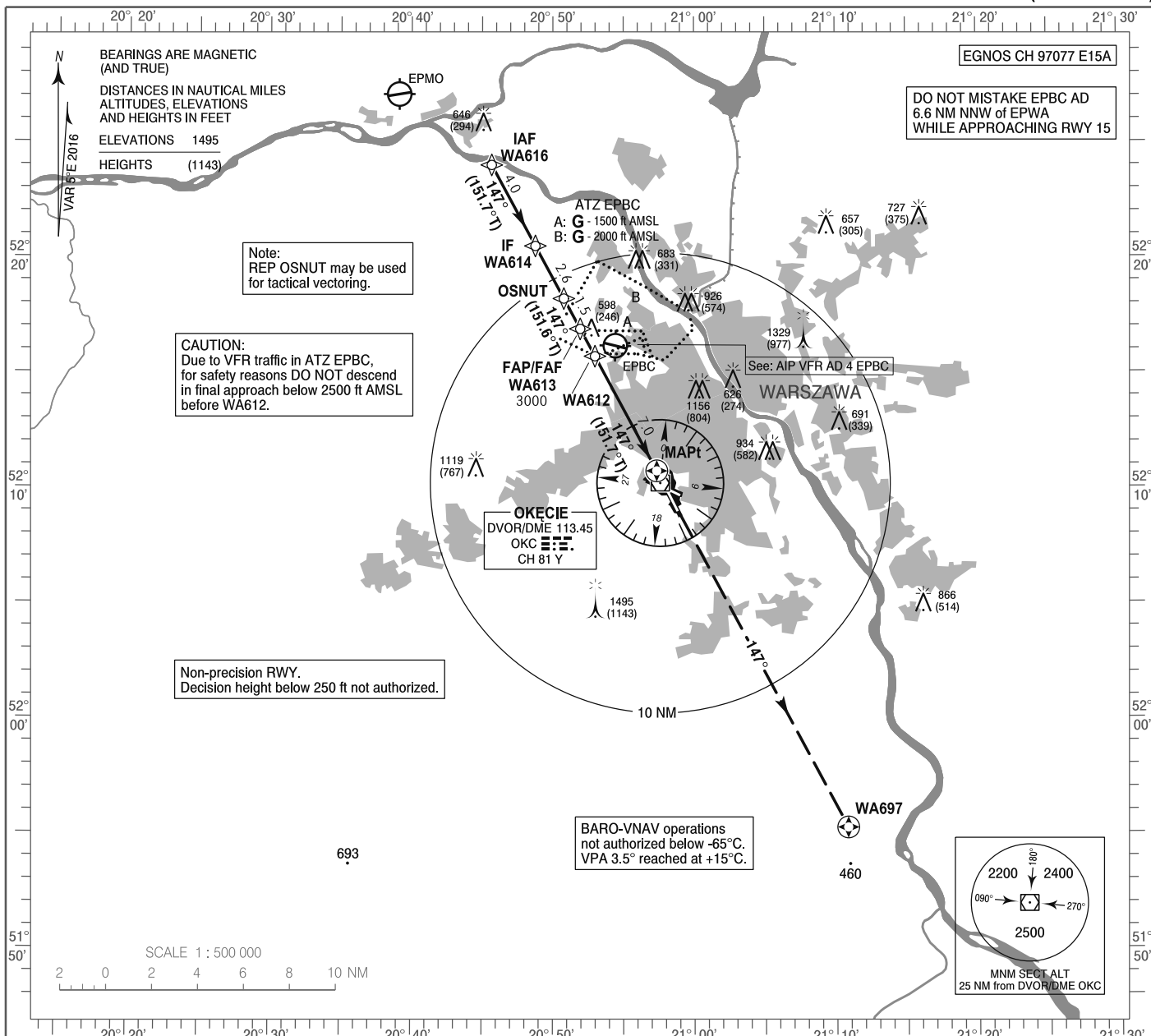


**INSTRUMENT
APPROACH
CHART - ICAO**

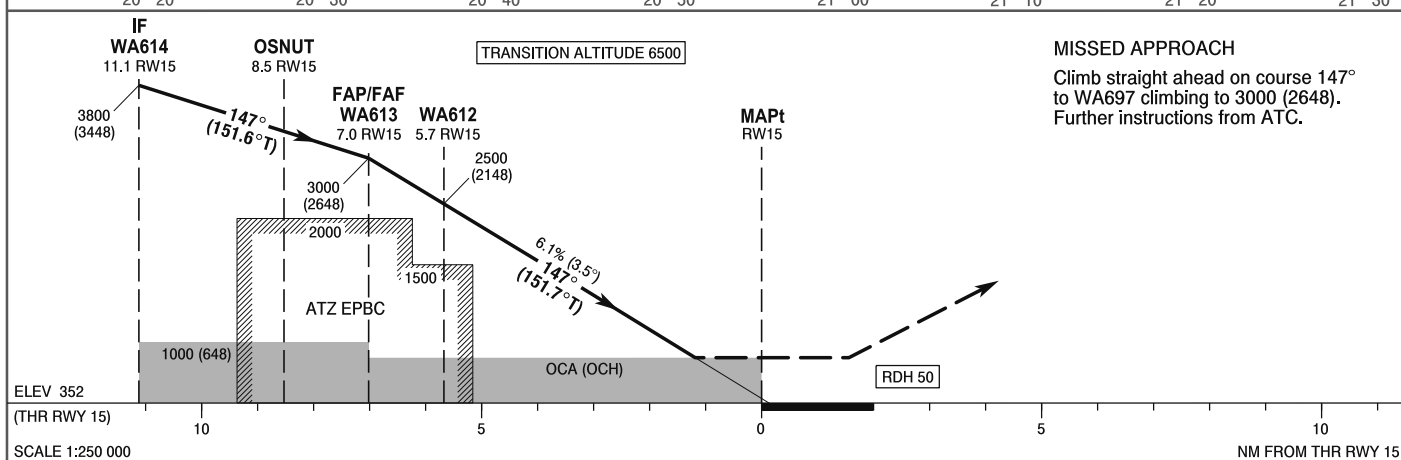
AERODROME ELEV 362 ft
THR RWY 15 ELEV 352 ft
HEIGHTS RELATED TO THR RWY 15

Warszawa APPROACH	128.805	Warszawa DIRECTOR	129.380
ATIS	125.055	Okęcie TOWER	118.305
	120.455	Okęcie GROUND	121.905

**WARSAW CHOPIN AIRPORT
RNAV (GNSS)
RWY 15 (CAT A/B/C/D)**



Correction: Circling withdrawn. Obstacles. FREQ. Editorial changes.



OCA (OCH)					Distance FAF - MAPt 7.0 NM							
Cat. of ACFT	A	B	C	D	Speed	kt	80	100	120	140	160	
Straight - in	LNAV	850 (498)	850 (498)	850 (498)	850 (498)	Time	min : s	5:16	4:13	3:31	3:01	2:38
	LNAV/VNAV	640 (288)	650 (298)	660 (308)	670 (318)	Rate of descent	ft / min	490	610	740	860	980
	LPV	524 (172)	538 (186)	548 (196)	561 (209)		Final approach distance/altitude (height)					
Circling approaches are prohibited					Distance	6	5	4	3			
					Altitude (height)	2620 (2268)	2250 (1898)	1890 (1538)	1520 (1168)			