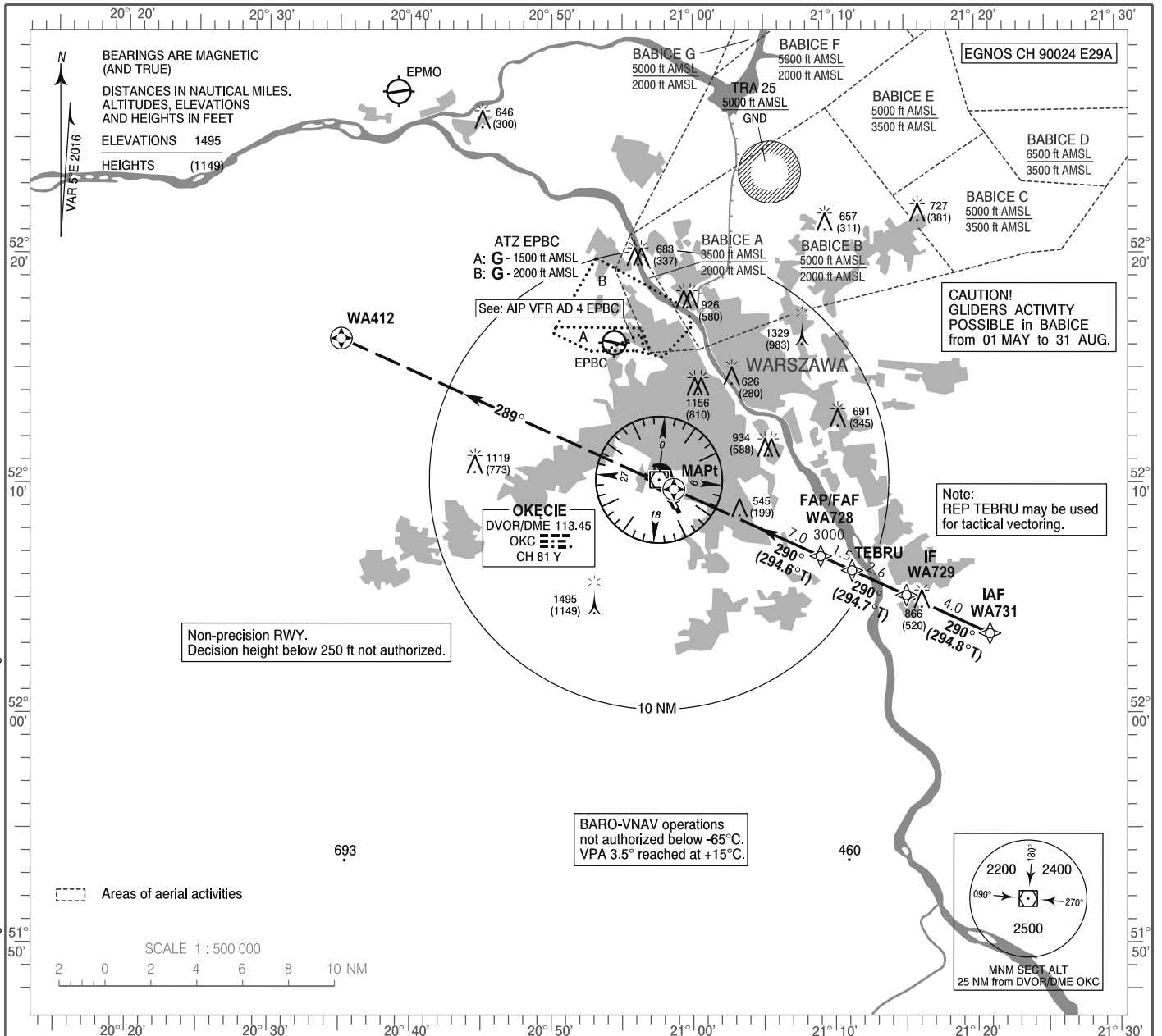


**INSTRUMENT
APPROACH
CHART - ICAO**

AERODROME ELEV 362 ft
THR RWY 29 ELEV 346 ft
HEIGHTS RELATED TO THR RWY 29

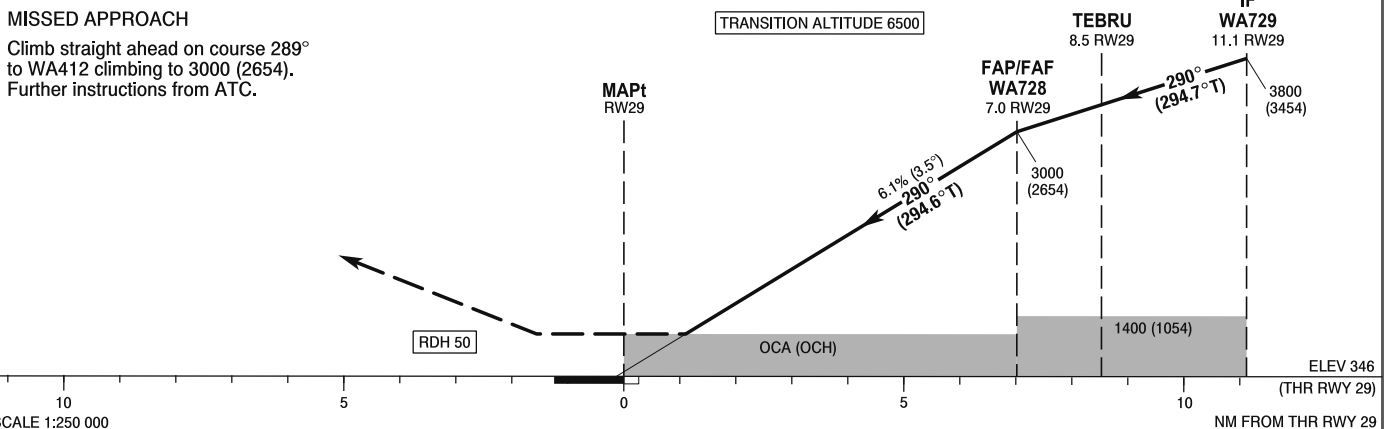
Warszawa APPROACH	128.805	Warszawa DIRECTOR	129.380
ATIS	125.055	Okęcie TOWER	118.305
	120.455	Okęcie GROUND	121.905

**WARSAW CHOPIN AIRPORT
RNAV (GNSS)
RWY 29 (CAT A/B/C/D)**



MISSED APPROACH

Climb straight ahead on course 289° to WA412 climbing to 3000 (2654). Further instructions from ATC.



OCA (OCH)					Distance FAF - MAPt 7.0 NM							
Cat. of ACFT	A	B	C	D	Speed	kt	80	100	120	140	160	
Straight - in	LNAV	800 (454)	800 (454)	800 (454)	800 (454)	Time	min : s	5:17	4:13	3:31	3:01	2:39
	LNAV/VNAV	640 (294)	660 (314)	670 (324)	680 (334)	Rate of descent	ft / min	490	610	740	860	980
	LPV	560 (214)	574 (228)	584 (238)	597 (251)		Final approach distance/altitude (height)					
Circling approaches are prohibited					Distance		6	5	4	3		
					Altitude (height)		2620 (2274)	2250 (1904)	1880 (1534)	1510 (1164)		